



# FSL

**Global Ltd.**

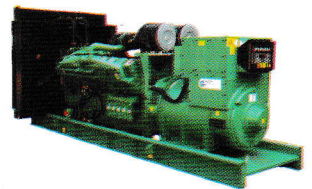


## FORKLIFT SOLUTION LTD.

A Trusted Supplier of all kinds of Industrial & Heavy Equipments

[www.fslglobal.com](http://www.fslglobal.com)

[www.fslglobal.com](http://www.fslglobal.com)



**HOTLINE : +880 1730-467073**



**ABOUT US:** Over the years, Forklift Solutions Limited (FSL) has earned a reputation for supplying world-class heavy equipment, spares and advanced logistic solutions for organizations. Starting the journey in 2015 as a spare-parts supplier for RAK Ceramics; today FSL is offering world-class solutions for modern production, warehousing and logistic business. These solutions and equipment are used by the industries and ventures those are directly involved in production and trading of goods & services.

Today, FSL serves the companies and entities with the solutions and products of world's top designers and manufacturers. Led by a group of young entrepreneurs and professionals, FSL has a pool of experienced & dedicated professionals to support organizations with high-end solutions and necessary support. FSL has wide exposure of providing equipment like Wheel Loaders, Bulldozer Cranes, Forklifts & Goods-storage systems and also offer necessary spares & support for maintenance. Besides these; FSL also supports organizations with support equipment like docking systems, ramps, cleaning and warehouse equipment etc. FSL ensures its clients with technical support along-with after sales service and necessary spares from the ready stock.

**MISSION:** Take up on the new challenges of tomorrow's technology and deliver the best leading edge quality & cost-effective solution to the end users.

**VISION:**

- To transform businesses by best suited technologies.
- Become a leading solution provider for all sort of technical requirements of the clients.

**OUR PRODUCTS**

<b>Construction equipment:</b>	<b>Industrial cleaning equipment:</b>
<ul style="list-style-type: none"> <li>• Backhoe Loader</li> <li>• Bulldozer</li> <li>• Cranes.</li> <li>• Excavator</li> <li>• Motor Grader</li> <li>• Road Roller</li> <li>• Tire Roller</li> <li>• Wheel Loader</li> <li>• All kinds of related spare parts</li> </ul>	<ul style="list-style-type: none"> <li>• Automatic Rechargeable Floor Scrubber</li> <li>• Driving-type Floor Rechargeable Scrubber</li> <li>• Driving Type Electric Sweeper</li> <li>• Sweeping Machine (Battery) Floor Scrubber</li> <li>• Wet and Dry Vacuum Cleaner</li> <li>• All kinds of related spare parts</li> </ul>
<b>Material handling &amp; warehouse equipment:</b>	<b>Industrial weighting &amp; measurement products:</b>
<ul style="list-style-type: none"> <li>• Aerial Lift Platform</li> <li>• Aluminum Alloy</li> <li>• Drum Lifter (Manual and Electric)</li> <li>• Forklift (Diesel, Electric &amp; Gasoline)</li> <li>• Hand Pallet Truck</li> <li>• Hand Pallet Truck with scale</li> <li>• Hydraulic Scissor Lift</li> <li>• Moveable Dock Ramp</li> <li>• Order Picker</li> <li>• Platform Lift</li> <li>• Stacker (Manual and Electric)</li> <li>• All kinds of related spare parts</li> </ul>	<ul style="list-style-type: none"> <li>• Digital Scale &amp; all kinds of spare parts</li> <li>• Motor Truck Scale</li> <li>• Platform Bench Scale</li> <li>• Stainless Steel Floor Scale</li> <li>• All kinds of related spare parts</li> </ul>
	<b>Industrial Rack:</b>
	<ul style="list-style-type: none"> <li>• Multi-Tier Rack</li> <li>• Pallet Rack</li> <li>• Shelving Rack</li> <li>• All kinds of related spare parts</li> </ul>



# Diesel & Electric Forklift



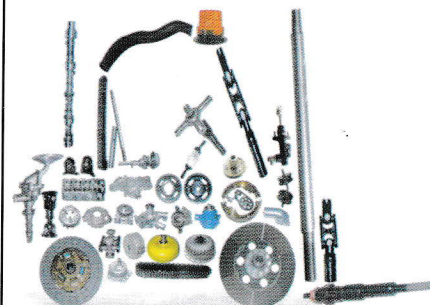
## Diesel Forklift Truck

Model: FD-25-50, Power Type: Diesel, Capacity: 2000-5000kg  
Load centre: 500 mm, Lift height: 3000mm-6000mm  
Engine: Mitsubishi/Isuzu, Transmission: Automatic  
Fork Length: 1070mm, Mast Type: 2/3 stage



## Electric Forklift Truck

Model: FB30, Power Type: Electric, capacity: 3000 kg  
Load centre: 500 mm, Lift height: 3000mm-6000mm  
Drive Control : Curtis(usa)  
Fork Length : 1070mm, Battery : 48v



## SPARE PARTS



## Electric Reach Truck

Model: SBR & SWR Series,  
Power Type: Electric, capacity: 3000 kg  
Load centre: 500 mm, Lift height: 3000mm-6000mm  
Drive Control : Curtis(usa)  
Fork Length : 1070mm,



## Manual Stacker

Model : SMS, capacity: 1000-2000 kg  
Load centre : 500 mm, Lift height : 1000-3000mm  
Fork Length: 1150mm



## Electric Stacker

Model : SFE, Power Type: Electric  
capacity: 1000-2000 kg  
Load centre : 500 mm, Lift height : 1000-3000mm  
Fork Length: 1230mm





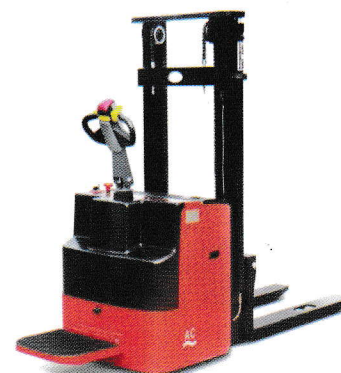
### Diesel Forklift Truck

Model: CPCD 01-25, Power Type: Diesel  
capacity: 1000-2500kg  
Load centre: 500 mm, Lift height: 3000mm-6000mm  
Engine: Isuzu, Transmission: Okamura(japan)  
Fork Length: 1220mm, Mast Type: 2/3 stage



### Electric Forklift Truck

Model: FB10-30, Power Type: Electric  
capacity: 1000-3000 kg  
Load centre: 500 mm, Lift height: 3000mm-6000mm  
Drive Control : Curtis (usa)  
Fork Length : 1070mm



### Electric Stacker

Model: CTQ-AC 10-1600, Capacity: 1000kg  
Max.fork height: 1600mm, Truck weight(kg): 730kg  
Min.fork height: 85-90mm, Load centre: 500 mm  
Fork Length: 1150mm, Battery: 2V\*12/240

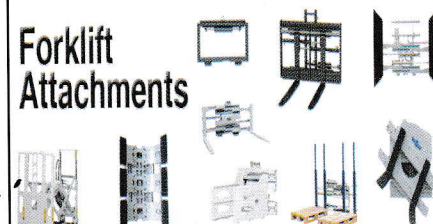


Inclinaison baril chariot

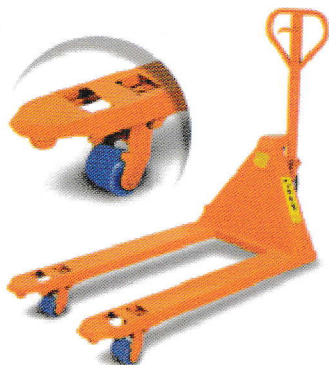


Forklift & OTR Tyre

### Forklift Attachments







### Hand Pallet Truck

Model: SHP 1500-2500-3500 kg  
Min.fork height: 85mm, Max.fork height:195mm  
Lifting height: 110mm, Fork length: 1150mm  
Single fork width: 160mm, weight: 92kg



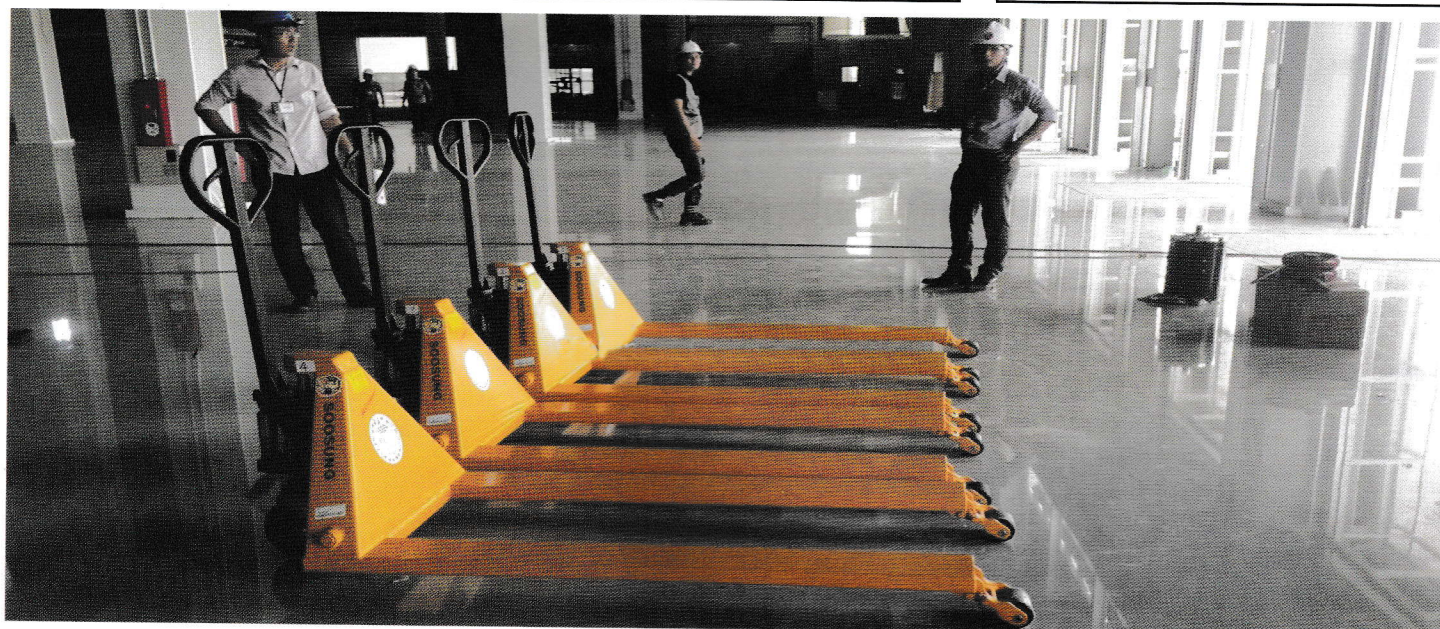
### Hand Pallet With Scale

Model: SHP 1500-2500-3500 kg  
Total lift height :195mm, weight: 130kg  
overall forks: 685mm, Fork length(mm):1150  
Lowered fork height: 85mm, wheel: 180x50



### Galvanized Pallet Truck

Model: CBY-HL, Capacity: 1500kg  
Min.fork height: 85mm, Max.fork height:800mm  
Fork length: 1150, Self Weight: 125-135 (kg)  
Fork wheel: Polyurethane

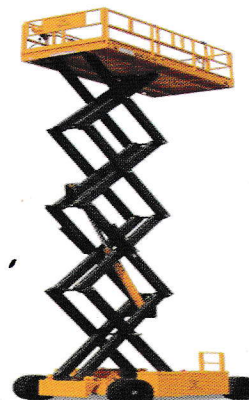


### Tow- Truck



### Stationary Hydraulic scissor lift

Model: SJG1-1.7, Capacity(kg): 1000,weight:1200kg  
Lifting height H2(mm)1700,Rated height(mm)2160  
Platform size(mm) 2500x2000  
Elevating time(s)30, Motor power(kw)2.2,



### Hydraulic Scissor table truck

Model: SSL-300, Capacity: 350kg  
Max.height: 06-18m  
Platform size(mm) 1000x2000x1000 (LWH)



# SCISSOR LIFT/ORDER PIKER/TELESCOPIC



## Aluminium Alloy Aerial Lift

Model: GTWY10-300, Load capacity: 300kg  
Platform height: 10000mm, Working height: 11700mm  
Motor power: 2.20kw, Self weight: 930  
Lifting motor(V): DC12V/AC240V,



## electric scissor platform

Model: GTJZ06, Load capacity: 230kg  
Working height: 7.8m, Platform height: 5.8m  
Lifting motor(V/kw): 24/3.0, Self weight: 1500  
Maintenance free battery(V/ah) 4x6/225



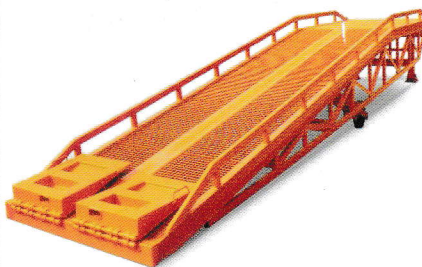
## Self-propelled Vertical Lifts

Model: GTWZ7.501, Load capacity: 125kg  
Platform height: 7500mm, Working: 9500mm  
Lifting motor(V/KW): DC 24/1.5  
Drive motors(V/KW): 2-24/0.5



## Self propelled telescopic boom

Model: GTBZ16S, Load Capacity: 320kg  
Platform Size(L\*W\*H): 1.8x0.76x1.1  
Max Climbing Degree: 16.7°(30%)  
Max Platform Height: 18mm



## Movable hydraulic dock ramp

Model: DCQH8-0.4, Capacity: 8000kg  
Max lifting height: 1700mm  
Platform size: 6000mm  
Length: 10300mm



## Movable Hydraulic Dock Leveller

Model: YDQ15/16, lifting capacity: 1500kg  
mensions of table: 2000x1600  
Max. lifting height: 1600mm  
Voltage(v): DC24V/AC380V



# HEAVY EARTH MOVING EQUIPMENTS



## **Wheel Loader 1.0-1.5ton**

Model: ZL 10-15

Description: The front frame adopts the box-type structure to ensure the reliable operation



## **Wheel Loader 1.8-3.0Ton**

Model: ZL18-30

Description: The coaxes flow -amplified, hydraulic compensated steering makes operation easy and performance well



## **Wheel Loader 5.0Ton**

Model: ZL50

Description: STEYR diesel engine, Turbo-charged, high power, low fuel consumption low noise force:  $\geq 160\text{KN}$ , Gradeability:  $30^\circ$



1. Power and driving system combine in optimize way, fast speed, short lifting time, small turning radius, operating cycling time is only 19 seconds, high efficiency. It adopts for used in mine factory and sand material ground.
2. CUMMINS 6CTA8.3-C215 STEYR diesel engine, Turbo-charged, high power, low fuel consumption low noise and reliable performance. with improved fan and radiator. it can work in more flexible working condition.
3. Single-phase, 4 elements double turbine hydraulic torque converter can make a good use of an engine and enlarge torque to make a large tractive force. with a planetary power shift transmission of 50; it is compact, higher transmission efficiency and speed with long service life.
4. Strengthen 50 series driving axle is high in load-bearing capacity and reliability, reasonable load distribution between front and rear axles and good in vehicles stability.
5. The radiator structure is optimized to offer more effective heat dissipation area. The air intake and outlet channel design of overall cooling system is optimized to effectively lower water temperature in the engine, oil temperature in the Hydraulic system and thus increase the cooling efficiency.
6. The bucket board adopt high intensity steel board then prolong its use life.

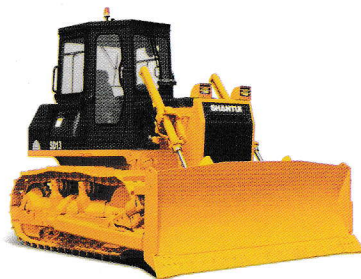


# EXCAVATOR/SKID LOADER/BACKHOE LOADER

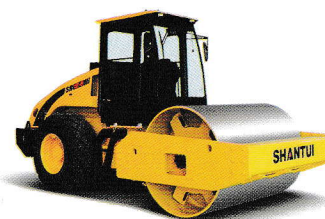
**SHANTUI**



Minimum ground clearance: 330 mm  
Overall length: 5710 mm  
Operating weight: 5.28 t  
Overall height: 2545 mm  
Ground pressure: 30.5 kPa



SD13 bulldozer adopts hydraulic drive and operation mode, featuring advanced and reasonable overall structure and good performances. This series bulldozer features moderate power, high technologic extent, and extensive application scope and is deeply favored by extensive users.  
Engine power: 130hp/1400rpm  
Operating weight of whole machine: 13700kg  
Inquiry



## Drum Vibratory Road Roller

SR12-5/SR12P-5 full-hydraulic single-drum vibratory road roller features strong power drive system and vibration system. The unique traveling and vibration hydraulic system and the 8-point central pressure measurement device make your operations simpler and more efficient. This machine can be used for the compacting of infrastructure projects and is suitable for the high-density compacting of the non-clayed materials as well as the clayed and semi-clayed materials



MODEL: PP9281-V  
RATED LOAD: 2200kg  
OPERATING WEIGHT: 6100kg  
RATED POWER: 80 / 100HP  
BUCKET: 1.0 / 1.2 / 1.5m<sup>3</sup>



MODEL: PP40E-IX  
OPERATING WEIGHT: 3750kg  
RATED POWER: 42kw  
BUCKET: 0.12m<sup>3</sup>



# INDUSTRIAL TRUCK SCALE AND FLOOR SCALE

**YAOHUA**



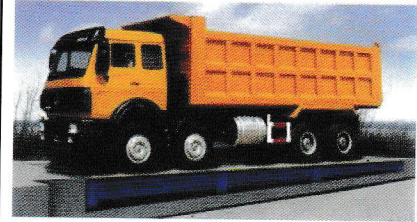
## Motor Truck Scale (3\*9)m

Model: SCS-10, capacity: 10-150Ton  
Indicator: Yaohua, load cells: Zemic  
Platform Size: 3\*9m, Devision value: 5-50kg  
Thickness of plate: 10/12mm



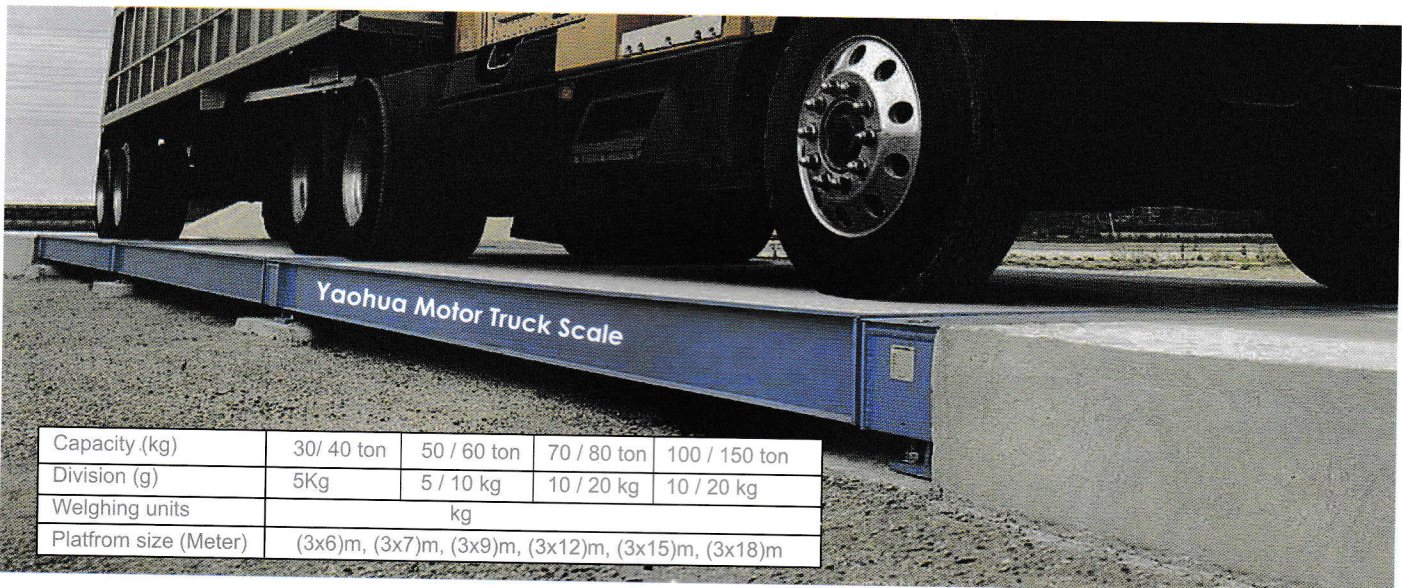
## Motor Truck Scale (3\*15)m

Model: SCS-10, capacity: 10-150Ton  
Indicator: Yaohua, load cells: Zemic  
Platform Size: 3\*15m, Devision value: 5-50kg  
Thickness of plate: 10/12mm



## Motor Truck Scale Customize

Model: SCS-10, capacity: 10-150Ton  
Platform Size: Customiz, Devision value: 5-50kg  
Indicator: Yaohua, load cells: Zemic  
Thickness of plate: 10/12mm



Yaohua Digital Platform Scale & Balance



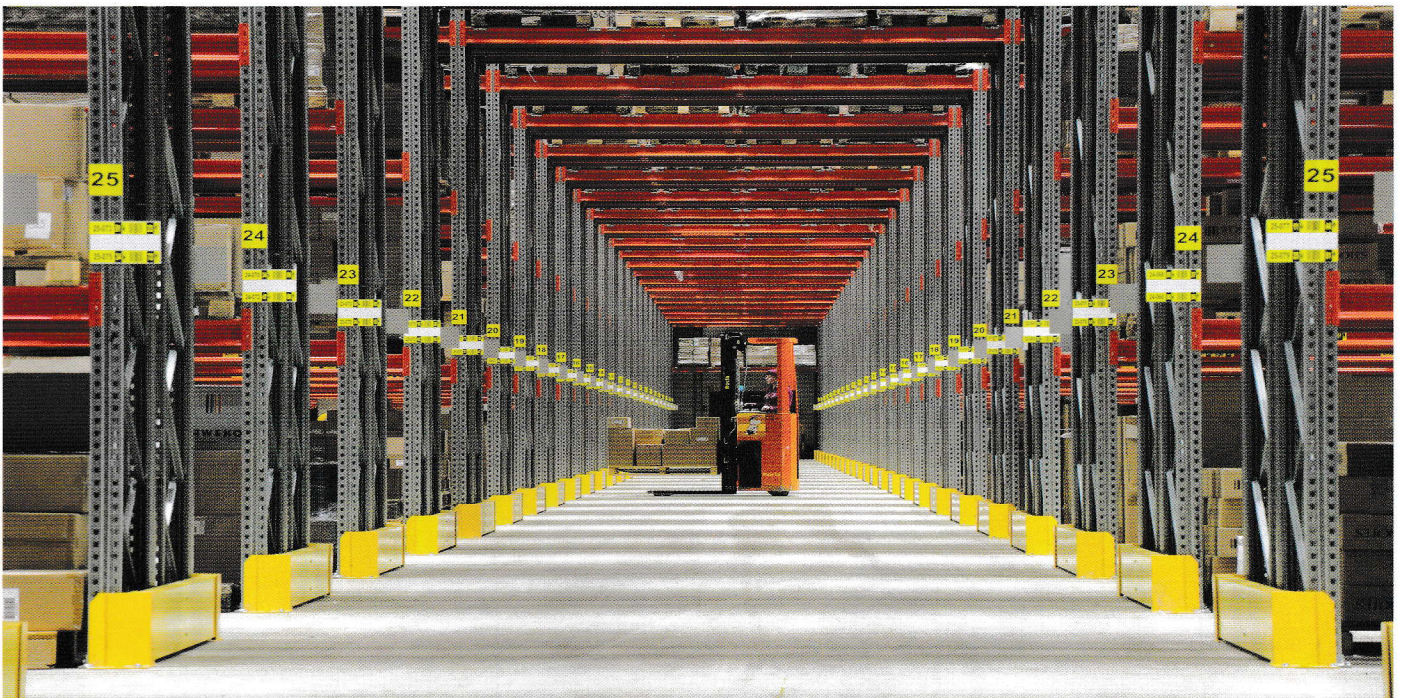
Crane



Overhead Cranes



# Industrial Rack



## Industrial Rack

### Shelving Rack

Selective Shelving  
Slotted Angle Shelving

### Drive In Rack

### Cantilever Rack

### Mould Rack

### Hanging Rack

### Fabric Relax Rack

### Mezzanine / Multi-Tier Rack

Bottom to Mezzanine Rack Top Clear  
Up to Mezzanine Rack Bottom Clear  
Top & Bottom Both Side Rack of Mezzanine  
Selectional Platform

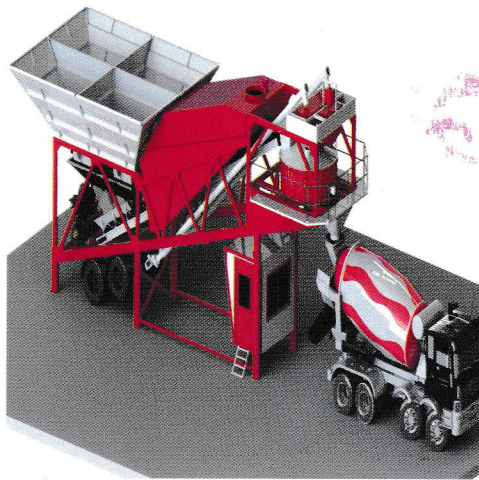
### Pallet Rack

Selective Pallet Rack  
Double Deep Pallet Rack  
Push Back Pallet Rack  
Pallet Flow Rack  
Shuttle Pallet Rack  
Mobile Pallet Rack  
ASRS Pallet Rack

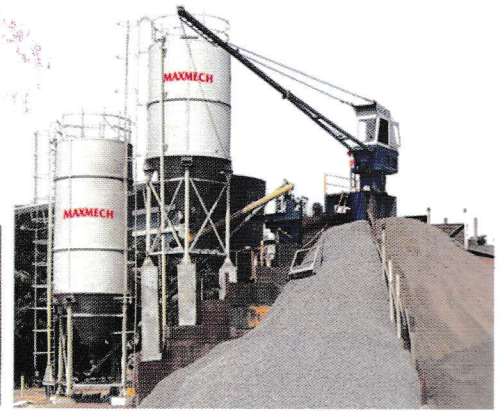




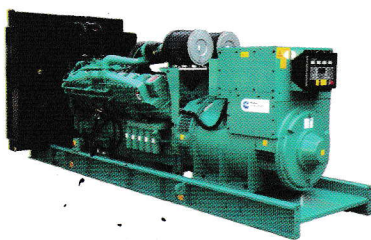
**Concreat Batching/Mixing Plant**



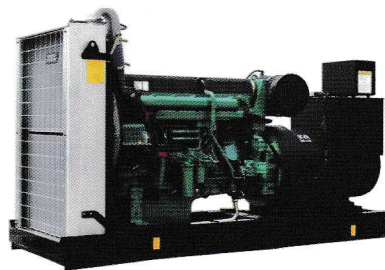
**Transit Mixer**



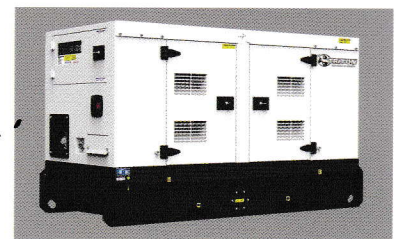
**Crusher Plant**



**Cummins Diesel Generator**  
Capacity : 50-1000 Kva



**Volvo Diesel Generator**  
Capacity : 50-1000 Kva



**Perkins Diesel Generator**  
Capacity : 50-1000 Kva



## OUR PARTNERS

Exclusive Dealer

**Soosung**

Exclusive Dealer



Dealer

**YAOHUA**

Sub-Dealer

**MITSUBISHI**  
FORKLIFT TRUCKS

Local Dealer

**MAXMECH**  
EQUIPMENTS PVT. LTD.  
An ISO 9001 : 2015 Company

**KOMATSU**

**HITACHI**  
Air Compressor

**SHANTUI**



Available Spare Parts



## SOME OF OUR VALUED CUSTOMER

ACI Limited	Noman Group	Envoy Group
Akij Group	Nowapara Jute Mills	Epylion Group
Al-Amin Construction	Outpace Spinning Mills	Fakir Group
Aman Group	Pakiza Group	Gemcon Group
Amber Group	Palmal Group	Great Wall Ceramics Limited
Anwar Group	Paradise Cable	Hameem Group
Aziz Pipe	Partex Star Group	Hua Thai Ceramics Limited
Bangladesh Thai Aluminum	Purbani Group	Kai Aluminum
Bashundhara Group	RAK Ceramics	Karim Group
BBS Cable	Reedisha Group	United Group
Bengal Group	Rising Group	Windy Group
City Group	Santa Group	Kazi Firm
DBL Group	Seven Circle BD Ltd.	Keya Group
Dekko Group	Shah Cement	Mawlanalspat
Deshbandhu Group	Star Ceramics	Meghna Group of Industries
DIRD Group	TK Group	Mir Cement
Nasir Group	Mondol Group	Max Group

## CONTACT US

House # 11, Road # 4, Block # F, Banani, Dhaka-1213, Bangladesh.

Cell: +88 01730-467073-82, Tel: 02-9891473, E-mail : [info@fslglobal.com](mailto:info@fslglobal.com), [fslglobal.bd@gmail.com](mailto:fslglobal.bd@gmail.com)

Web: [www.fslglobal.com](http://www.fslglobal.com)

**HOTLINE : +88 01730-467073**